



Serendipity Software Pty Ltd

ICCTool

V1.0

released on 21st October 2003

# ICCTool

## License

This software is provided free of charge without warranty to use as you wish within the confines of this license. Serendipity Software cannot be held liable in any way for any problems that may arise from the use of this software. The software remains the property of Serendipity Software Pty Ltd and cannot be changed or modified in any way. Serendipity Software reserve the right to change, modify or withdraw the software at any time for any reason without prior consent. You are not allowed to sell this software to any one without written permission from Serendipity Software.

## Support

We do not provide direct support for this but please email bugs to support@riponce.com - Please include platform, operating system and the description of the problem.

## Overview

ICCTool is a utility that allows you to see how a colour maps through the Serendipity Colour Management Module (CMM) when different profiles and rendering intents are selected.

## Platform Specification

This software operates on Mac OSX 10.2 and above. Linux RedHat 7.2 and above and Windows NT/2000/XP

## Introduction

The basic operation of the tool is very simply. You select the source (match) profile that you want to use, and the destination (usually proofer) profile that you are mapping to. You enter a CMYK value of a colour on the left and can see the CMYK and LAB values that you would get on output. Further more, if you select a monitor profile for your display, you will get an accurate representation of the colour on screen.

## Use

The following steps detail the use of this software. All screen shots used to describe this are taken from the Mac OSX platform.

## Installing ICCTool

MacOSX - Drag the ICCTool Application into your desired folder.

Linux - This comes in a tar gzip format. Unzip and untar to a folder in your desired location.

Windows - Unzip the ICCTool directory into your chosen location.

Starting ICCTool

To start the ICCTool, double click on the ICCTool icon



The Window

The Application will launch and the window will appear.

Create your colour by entering the CMYK values or adjusting the sliders

Select Colours that you have previously kept

The Output values are displayed

Choose the Rendering Intent

Choose the accuracy of the CMM

Keep the colours for later reference

Select your input profile  
Supported profiles are Monitor, Input (Scanner) or Output (CMYK or RGB)

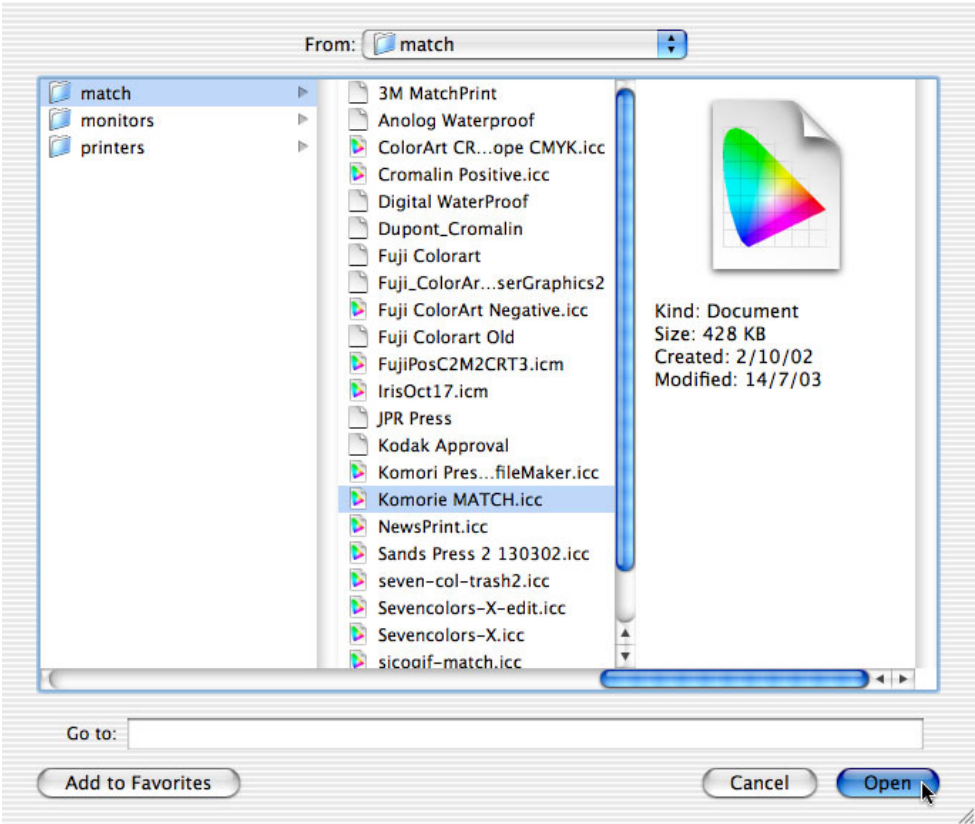
Select your monitor profile

Select your output profile  
Supported profiles are Monitor or Output

Configuration

Choosing Profiles

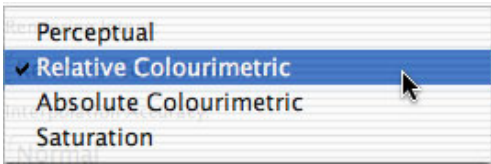
Once the ICCTool is running, the first thing to do is to select the ICC profiles. Choose the input (match) profile by selecting the “Choose Profile”



Repeat this for each of the profiles. By selecting a profile for the monitor you can achieve an accurate representation of the colour on the screen. These profiles can be changed at any time to see how colour values differ when passed through different source and destination profiles.

Rendering Intent

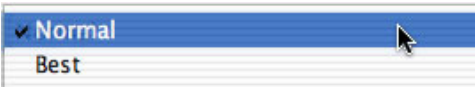
Choose the rendering intent that you want to use to evaluate a colour.



Altering the intent with a colour selected will usually alter the look of the colour and the values shown on output.

Interpolation Accuracy

There is a choice between normal and best. The output values may change between the two. This is the same as setting faster and better in the Black-Magic system settings for ICC Accuracy.

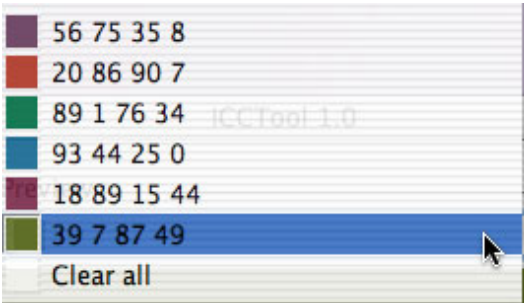


Operation

The use of this tool is very simple. Create a colour by either entering the values in the text field boxes or by adjusting the sliders. As you enter or adjust the colour values you will see the colour change in the viewing window in the middle. The input sliders will either be RGB or CMYK depending on the type of match profile that you have selected.

The Output values are shown in either CMYK or RGB depending on the type of profile selected. The numbers represent the output values of colour selected as input when mapped through the profiles using the rendering intent chosen.

You can “keep” colours so that you can go back to them for later reference.

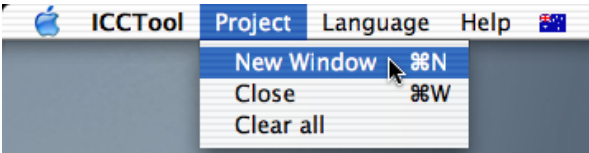


These are kept in the list only while ICCTool is running and are cleared when it is quit. If you wish to clear the list while the tool is running the select “Clear all” from the list.

Menu Items

Project

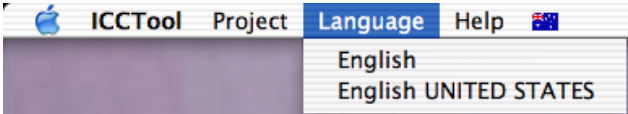
You can launch multiple windows so that you can view different colours simultaneously, or the same colour with different rendering intents to compare them.



Choose “New Window” from the Project menu or type cmd. N (Mac) or control N (windows/Linux). You can run as many ICCTool windows as you wish.

Language

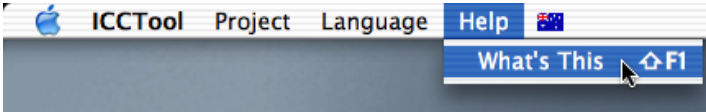
You can change your language by selecting it from the Language menu item.



After selecting your language you will need to restart ICCTool for the changes to take place. These settings will remain until you change the language again and restart. Currently the only language available is English and US English. More languages will be added at a later date.

Help

At any time you can use the online help to find out what a particular item is or does.



Choose “What’s this” from the Help menu or select shift F1 and the mouse pointer changes to a hand (Mac) or question mark (Windows). Click on a button or slider for a brief description of what it is.